

Review



Cite this article: Himmel NJ, Cox DN. 2020 Transient receptor potential channels: current perspectives on evolution, structure, function and nomenclature. *Proc. R. Soc. B* **287**: 20201309.
<http://dx.doi.org/10.1098/rspb.2020.1309>

Received: 5 June 2020

Accepted: 8 July 2020

Subject Category:

Evolution

Subject Areas:

evolution, neuroscience, taxonomy and systematics

Keywords:

transient receptor potential evolution, transient receptor potential phylogeny, molecular evolution, ion channel evolution

Author for correspondence:

Daniel N. Cox

e-mail: dcox18@gsu.edu

Electronic supplementary material is available online at <https://doi.org/10.6084/m9.figshare.c.5090756>.

Transient receptor potential channels: current perspectives on evolution, structure, function and nomenclature

Nathaniel J. Himmel and Daniel N. Cox

Neuroscience Institute, Georgia State University, Atlanta, GA, USA

NJH, 0000-0001-7876-6960; DNC, 0000-0001-9191-9212

The transient receptor potential superfamily of ion channels (TRP channels) is widely recognized for the roles its members play in sensory nervous systems. However, the incredible diversity within the TRP superfamily, and the wide range of sensory capacities found therein, has also allowed TRP channels to function beyond sensing an organism's external environment, and TRP channels have thus become broadly critical to (at least) animal life. TRP channels were originally discovered in *Drosophila* and have since been broadly studied in animals; however, thanks to a boom in genomic and transcriptomic data, we now know that TRP channels are present in the genomes of a variety of creatures, including green algae, fungi, choanoflagellates and a number of other eukaryotes. As a result, the organization of the TRP superfamily has changed radically from its original description. Moreover, modern comprehensive phylogenetic analyses have brought to light the vertebrate-centricity of much of the TRP literature; much of the nomenclature has been grounded in vertebrate TRP subfamilies, resulting in a glossing over of TRP channels in other taxa. Here, we provide a comprehensive review of the function, structure and evolutionary history of TRP channels, and put forth a more complete set of non-vertebrate-centric TRP family, subfamily and other subgroup nomenclature.

1. Introduction

Transient receptor potential (TRP) channels typically share six transmembrane segments and form ion channels with varying cation selectivity [1]. TRP channels are gated by a wide variety of mechanisms and stimuli (including thermal, mechanical and chemical), and function in a plethora of systems, chiefly as signal transducers. These proteins have diversified greatly over the course of evolution, acquiring differing domain arrangements, shifting modality specificity, and being recruited into various tissue types, from renal to neural.

The explosion of interest in TRP channels over the last two decades has resulted in a radical restructuring of the superfamily from its original conception. Current evidence supports nine animal TRP families [1–3]: TRPP (polycystin or polycystic kidney disease), TRPML (mucolipin), TRPA (ankyrin), TRPV (vanilloid), TRPVL (vanilloid-like), TRPC (canonical), TRPN (nompC, or no mechanoreceptor potential C), TRPM (melastatin) and TRPS (soromelastatin) (figure 1). TRP channels, however, are widely expressed across eukaryotic taxa [1–11]. Here, we provide an inclusive overview of TRP channels, focusing on their evolution and familial organization.

2. On the early evolution of transient receptor potential channels

At the highest level, TRP channels are divided into two major groups [1,12]: Group 1 (TRPA, TRPM, TRPN, TRPS, TRPV and TRVL) and Group 2 (TRPP and TRML, and possibly TRPY/TRPF). Animals, choanoflagellates, apusozoans,

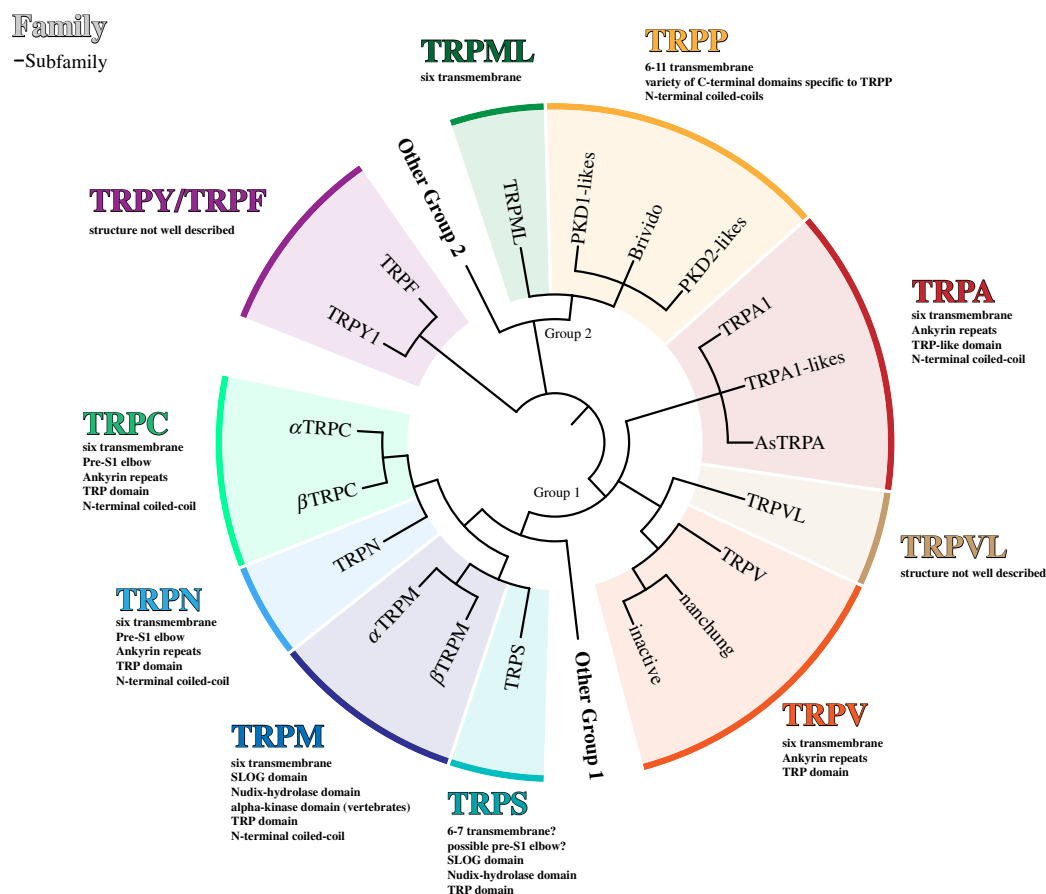


Figure 1. Current view of the relationship between TRP families (bold large) and subfamilies (at tree tips). For detailed family/subfamily/subgroup phylogenies and structural models, see electronic supplementary material, figures S1–S9. (Online version in colour.)

alveolates and green algae have representatives in both Group 1 and Group 2 (figure 2) [3,4,14,15]. Given that TRP channels have been described in a variety of eukaryotes, and as there is no evidence of TRP channels in either Archaea or Bacteria, TRP channels probably developed into their recognizable form early in eukaryote evolution.

Despite lack of extensive cross-kingdom phylogenetics, much of the literature suggests that the root is between Group 1 and Group 2, where the branch is typically longest [3,11]. Given the distribution of TRP channels across eukaryotic taxa (figure 2), the most parsimonious hypothesis is that this split pre-dates the bikont–unikont split. It is worth noting that others have found the root nearer the TRPP–TRPML split, but not with high branch confidence [16].

(a) Group 1 diversification

The currently recognized Group 1 families (TRPA, TRPC, TRPM, TRPN, TRPS, TRPV and TRPVL) almost certainly pre-date the Cnidaria–Bilateria split (earlier than 750 Ma) [2,3]. Many also probably pre-date the emergence of animals, as choanoflagellate have at least TRPM, TRPC and TRPA [3,6]. Algae also have channels which resemble Group 1 channels, one which is postulated to be a TRPV [14], and others which form a sister clade to the clade containing TRPN, TRPM and TRPC (and TRPS, though this analysis pre-dates the discovery of TRPS; figure 2, Other Group 1) [4]. There is some evidence that TRPM pre-dates the bikont–unikont split, as *Lingulodinium polyedra* (Alveolata) has two channels which are similar to TRPM [9].

(b) Group 2 diversification

In Group 2, evidence supports an early split between TRPML and TRPP, as at least animals, amoebozoans and alveolates express both (other eukaryotes, including fungi, may only express one or the other) [1–11]. There is some evidence of earlier splits which resulted in TRP families that were lost in many taxa but remain present in algae and alveolates (figure 2, Other Group 2) [4,9]. Assuming the evidence supporting Other Group 2 channels is veridical, and assuming the hypothesis that the TRP channel root is between Group 1 and Group 2, evidence currently supports that the Other Group 2–TRPML/TRPP split, and the subsequent TRPML–TRPP split, occurred in a common eukaryote ancestor.

3. TRP families

(a) TRPA: ankyrin

TRPA (A for ankyrin) channels are named for their characteristic ankyrin repeats, a sequence motif broadly present across proteins of all types [1,2,17]. The TRPA family has been divided into three major subfamilies: TRPA1, TRPA1-like and ‘basal’ (here called AsTRPA; electronic supplementary material, figure S2A) [3,18–21].

TRPA1 and the related genes described here encode six-transmembrane segment spanning ion channels which assemble as homotetramers (electronic supplementary material, figure S2B). A number of highly conserved ankyrin repeats make up the bulk of the N-terminal domain, while

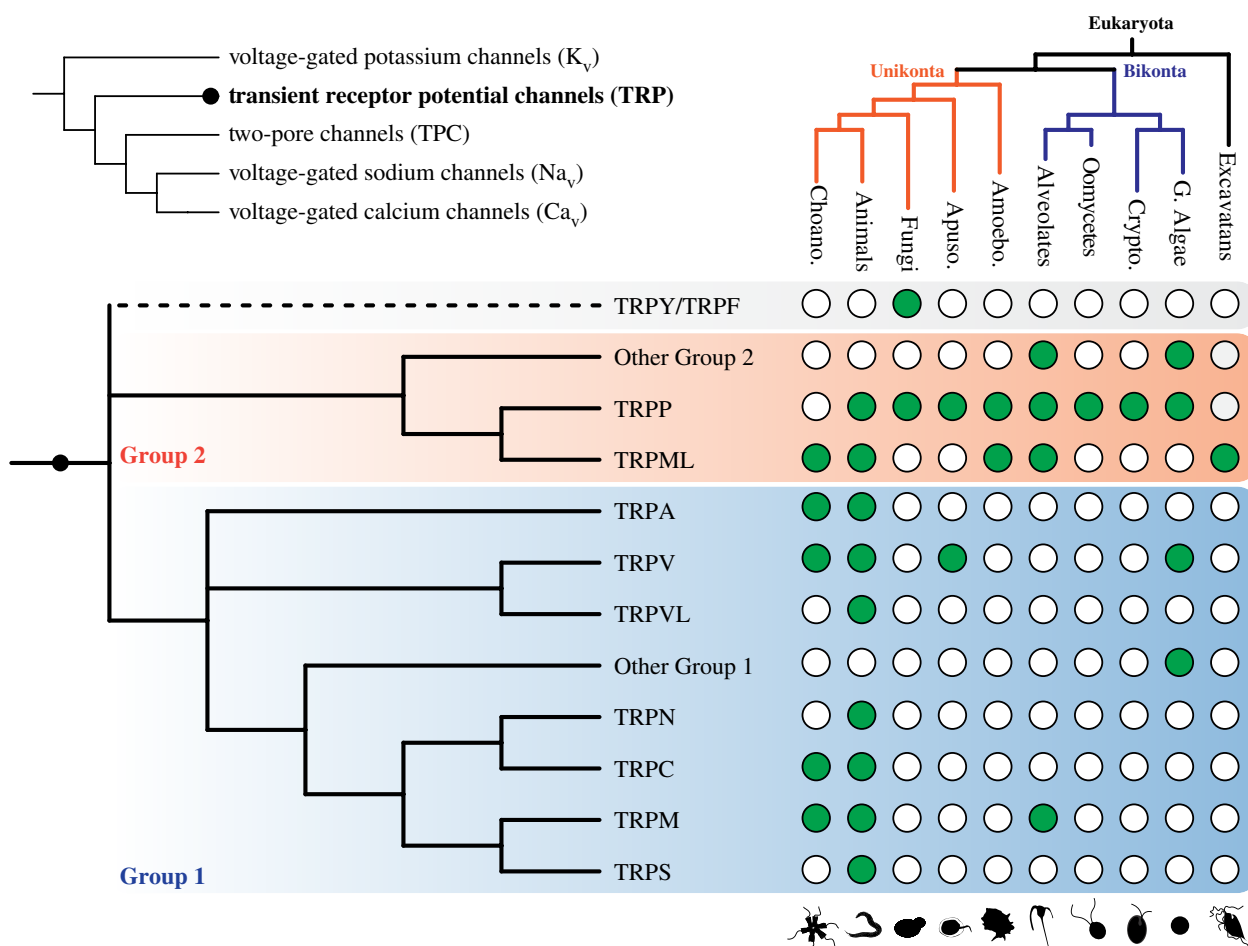


Figure 2. Consensus phylogeny and distribution of the TRP superfamily. Top left shows TRP in the voltage-gated ion channel clade [13]. Taxa shown here: animals, choanoflagellates (Choano.; unicellular flagellates closely related to animals), fungi, apusozoans (Apuso.; flagellate eukaryotes), amoebozoans (Amoebo.; amoeboid eukaryotes), alveolates (including dinoflagellates), oomycetes (fungus-like eukaryotes), cryptophyte and green algae (Crypto. and G. Algae) and excavatans (basal eukaryotes). Filled circles indicate that the family to the left has been proposed to be present in the taxon above; blank circles indicate no evidence for that family in the indicated taxon [1–11]. The dashed line for TRPY/TRPF indicates that its placement is especially uncertain. (Online version in colour.)

the C-terminal domain (CTD) contains a coiled-coil, and a so-called TRP-like domain critical to ligand binding [22].

Initially associated with human fibroblasts [23], TRPA1 was soon identified as a temperature-activated TRP channel [24,25]. It is now known to be polymodal, sensing hot and cold [25,26], mechanical perturbations [27], hypoxic water [28], electrophilic chemicals [29–31], cinnamaldehyde [32], cannabinoids [31], menthol [33], icilin [34], reactive oxygen species [35] and endogenous molecules associated with tissue damage [36], among many others [37].

Some of these functions are conserved across species, and therefore may be inherited from a common TRPA1 ancestor [18,19]. For example, cysteines critical to AITC sensing are thought to be conserved from such an ancestor [19]. By contrast, TRPA1 is required for menthol-evoked behaviour in *Drosophila*, but it is not directly gated by it, nor are amino acids critical to mammalian TRPA1 menthol sensitivity well conserved [18,38].

A variety of other channels phylogenetically similar to TRPA1—here referred to as TRPA1-like—have been found in cnidarians, ecdysozoans (protostomes which notably grow by molting), and lophotrochozoans (a major spiralian clade) [18,39]. The function of these channels is less well understood.

The ‘basal’ subfamily includes several subgroups restricted to arthropods (painless, pyrexia, water witch, HsTRPA, TRPA5 and TRPApw) [40–44]. We suggest that the use of

‘basal’ is uninformative, as arthropods are not informatively basal with respect to say, vertebrates, nor is this subfamily obviously basal in the TRPA family. Given that this clade and the subgroups therein appear to be restricted to arthropods, here they will be referred to as arthropod-specific TRPAs (AsTRPA). AsTRPA channels participate in similar processes as TRPA1. For example, painless, pyrexia and HsTRPA participate in high-temperature sensing, pointing to a shared ancestral function [40,41,44], while water witch functions in hygro- and sound detection [42,45].

(b) TRPC: canonical

Drosophila trp, the namesake of the TRP channel family, was first described by Cosens & Manning in 1969 when they observed that *trp* mutant flies behaved in a T-maze as if they were blind [46]. *trp* was eventually characterized as an ion channel critical to phototransduction by Montell & Rubin in 1989 [47], and independently shortly thereafter by Wong *et al.* [48]. This was undoubtedly the beginning of the modern study of TRP channels.

trp now belongs to the TRPC family (C for canonical). Here, we propose that the metazoan TRPC family is subdivided into two distinct subfamilies, α TRPC and β TRPC (electronic supplementary material, figure S3A). Although TRPC channels have been phylogenetically well characterized, this does not

extend to non-arthropod protostomes nor non-protostome invertebrates [2,3,20,21], and thus here, only vertebrate paralogues and a broad protostome clade are shown (electronic supplementary material, figure S3B). The proposed α - β distinction is phylogenetically well supported in the literature cited above, but has not been explicitly named. Here, this distinction only serves to illustrate that vertebrate and non-vertebrate TRPCs are not all orthologous.

TRPC channels have a relatively archetypal TRP structure (electronic supplementary material, figure S3B) with the addition of a hydrophobic segment called the Pre-S1 elbow. The Pre-S1 elbow spans only half the plasma membrane, allowing the protein to curl back intracellularly, and is thought to participate in lipid binding [49–51]. The general features of TRPC channels also include a C-terminal TRP domain, a coiled-coil and N-terminal ankyrin repeats [49–51]. Put relatively broadly, TRPC channels typically function as part of the phospholipase C signal transduction pathway (reviewed recently and extensively by Wang *et al.* [52]).

(c) TRPM: melastatin

TRPM (M for melastatin) was named after melastatin/MLSN1 (now known as TRPM1), a transcript correlated with melanoma aggressiveness [53,54]. TRPM channels typically form archetypal six-transmembrane ion channels with a highly conserved N-terminal SLOG domain (of relatively unknown function), a C-terminal TRP domain (shared with TRPN, TRPC, TRPS and TRPV), and a variable CTD, which may include a Nudix-hydrolase-like domain and/or an alpha kinase (electronic supplementary material, figure S4B) [1,2,55–57].

Canonically, TRPM had been said to have eight distinct subfamilies: TRPM1–TRPM8. However, more recent phylogenetic analyses have made it clear that TRPM1–8 are restricted to vertebrates, and that the 1–8 identifiers do not accurately reflect the makeup of the TRPM family in other organisms [2,18,58]. The recently reorganized TRPM family is divided into the α TRPM and β TRPM subfamilies (electronic supplementary material, figure S4A), their split having occurred sometime before the Cnidaria–Bilateria split (greater than 750 Ma). Most bilaterian taxa studied, except Tardigrada, have TRPM channels, typically within both subfamilies [2].

At least among mammals, most TRPMs serve as Ca^{2+} -permeable sensors of various stimuli [59]. There is some evidence that TRPM channels share functional capacity across the α - β divide. For example, both vertebrate TRPM8 (a β TRPM) and *Drosophila* Trpm (α TRPM) function in cold and menthol sensing [18,60–65]. In vertebrates, the α TRPMs TRPM6 and TRPM7 evolved so-called chanzyme activity, by which they function as both Mg^{2+} channels and protein kinases; there is also evidence that cnidarian and choanoflagellate TRPMs function as chanzymes via their linked Nudix domains, and it has thus been suggested that this is an ancestral function of TRPM proteins [66,67].

A third putative subfamily, TRPMc (formerly called TRPMm), has been found in some arthropods and possibly cnidarians; however, its presence and position are inconsistent and phylogenetically unstable [2,20,21].

(d) TRPML: mucolipin

The TRPML family (ML for mucolipin; originally called MCOLN) is named due to its causative role in mucopolipidosis type IV, a neurodegenerative disorder [68,69]. Most invertebrates

have a single TRPML, whereas vertebrate TRPML expanded into TRPML1–3 (electronic supplementary material, figure S5) [3,70]. Cnidarians, sponges, placozoans and choanoflagellates also have TRPMLs, but their phylogenetic position has been less well described [3].

In mammals and insects, TRPML1 and *trpml*, respectively, are thought to be localized to late-endosomes and lysosomes [71–73]. By contrast, mammalian TRPML2 and TRPML3 are thought to localize to the cell plasma membrane, much like other canonical TRP channels, where they function in regulation of the endosomal pathway and innate immunity [74–80]. TRPML structure and physiology is best understood in mammals [81] and remains otherwise understudied.

(e) TRPN: No mechanoreceptor potential C

TRPN (N for *nompC*, short for no mechanoreceptor potential C) was named after the mutant phenotype in *Drosophila*, which consists of defects in mechanosensory transduction [82]. Despite the occurrence of several independent whole-genome duplications across bilaterian taxa, only a single TRPN is predicted to be present in bilaterian genomes [17]. There is no evidence of TRPN in placozoans, comb jellies, or choanoflagellates, leading to the suggestion that TRPN emerged in a common cnidarian–bilaterian ancestor after animals emerged [3,17]. However, the most closely related TRP family is typically thought to be TRPC, and choanoflagellates are thought to have a TRPC [2,3,17]; this would suggest that TRPC and TRPN split before animals emerged, and that TRPN was lost in the taxa indicated above.

TRPNs form archetypal TRP channels—six-transmembrane spanning units, with a Pre-S1 elbow, which organize as homotetramers (electronic supplementary material, figure S6) [83]. TRPN channels have remained remarkably unchanged over the course of evolution, typically containing 28–29 ankyrin repeats and a TRP domain, leading to the hypothesis that these structures are critical to protein function [17]. It has since been demonstrated that ankyrin repeat-microtubule tethering is critical to TRPN function [84]. TRPNs primarily participate in mechanosensation [82,85–90]. *Drosophila* *nompC* is also required for larval cold nociception, although its mechanisms are unknown [65].

(f) TRPP: polycystin

TRPP (P for polycystin) is named due to the causative role of *PKD1* and *PKD2* in polycystic kidney disease [91,92]. TRPP channels are organized into three subfamilies: PKD1-like, PKD2-like and the brividos (electronic supplementary material, figure S7A) [93,94]. PKD1-likes are relatively unique in that they do not encode canonical 6-transmembrane ion channels (electronic supplementary material, figure S7B) [95]. Although they share sequence homology in their transmembrane segments, PKD1-likes are large genes encoding proteins with 11 transmembrane domains and many extracellular domains, including so-called PKD repeats of unknown function [93,96–98].

Within the PKD2-likes, the PKD2, PKD2L1 and PKD2L2 subdivisions are not representative of all eukaryotes. For example, *Drosophila* [99], *C. elegans* [100] and cnidarian [3,17,101] PKD2-likes phylogenetically sort independent of vertebrate PKD2, PKD2L1 and PKD2L2 [93]. This is also the case for channels from non-vertebrate chordate taxa, including but not limited to the tunicate *Ciona intestinalis*; as such, PKD2,

PKD2L1 and PKD2L2 likely differentiated specifically in vertebrates [5].

Insects have three additional TRPP family members, referred to as the brividos, which sort independently [94,102,103]. In current phylogenetic analyses, the brividos form a sister clade to all other PKD2-likes, yet brividos have only been noted in insects [102,103]. Given that insects also have PKD2-likes, it follows that the brivido-PKD2 split occurred before the protostome–deuterostome split (approx. 550 Ma) and was lost in most bilaterian taxa except insects. This, however, has not been formally explored in the literature. Moreover, neither non-animal PKDs nor non-bilaterian PKDs have been phylogenetically characterized alongside the brividos.

With respect to function, and like many of their cousins, TRPPs are multimodal and most well understood in mammals [81]. Together, mammalian PKD2- and PKD1-like proteins interact via their shared coiled-coil and tetragonal opening for polycystin (TOP) domains, forming heteromeric mechanosensory units [104,105]. This mechanosensitive unit most notably functions in cilia-dependent mechanosensation in mammalian renal tissues [106]. This mechanosensory function extends to other species as well, although it remains less studied [5,65]. In *Drosophila*, Pkd2 and the brividos also function in cold sensing [65,94,107]. Yeast likely encode 2 TRPPs, called pkd2 and Pkd2p, which function to regulate cell shape, cell wall synthesis, and cell separation during cytokinesis [108,109].

(g) TRPS: soromelastatin

TRPS (S for soromelastatin; *soro-*, sister) is the most recently discovered TRP family, and was named due to its position as a sister group to TRPM [2]. TRPS is relatively widely expressed among bilaterians, yet is among the most understudied of the TRP families, perhaps because it is not present in vertebrates or insects. While there is only a single major TRPS clade when considering metazoans as a unit (electronic supplementary material, figure S8A), TRPS has independently expanded among molluscs, nematodes, tardigrades, myriapods (including centipedes) and chelicerates (including arachnids) [2]. The function of TRPS, however, remains mostly mysterious. Only a single member has been functionally characterized: *C. elegans ced-11*, which encodes a Ca²⁺ channel which participates in apoptosis [110].

Outside of domain identification via sequence homology, the structure of TRPS channels has not yet been elucidated (and thus is shown here via a simplified model; electronic supplementary material, figure S8b) [2]. Transmembrane predictions of *ced-11* indicate that there are seven transmembrane domains; one might, therefore, hypothesize that they are similar in structure to TRPN and TRPC, in that the ‘extra’ hydrophobic cluster may be a pre-S1 elbow-like structure (perhaps indicating this is a conserved feature from a common N/C/M/S ancestor). Like TRPM channels, TRPS channels have SLOG, Nudix-hydrolase and TRP domains.

(h) TRPV and TRVL: vanilloid and vanilloid-like

TRPV (V for vanilloid) is named due to TRPV1’s sensitivity to two vanilloid compounds, capsaicin and resiniferatoxin. TRPV genes encode canonical 6-transmembrane segment spanning ion channels characterized by N-terminal ankyrin repeats and a C-terminal TRP domain (electronic supplementary material, figure S9B) [111,112], their structure and gating mechanisms most well understood in mammals [113].

One of two *Drosophila* TRPV gene loci was first described in 1977 by W. D. Kaplan, via the *inactive* (*iav*) mutation [114]. Over the course of the next two decades, the *iav* mutation was associated with courtship and locomotion abnormalities [115–117], and an aberrant response to cocaine [118]. Nearly 30 years later, *iav* was characterized as one of two *Drosophila* TRPV channels, alongside *nanchung* [119,120]. TRPVs, however, were first described as channels in 1997: in mammals (VR1, now TRPV1) [121], and in *C. elegans* (OSM-9) [122].

The TRPV family is divided into three distinct sub-families (electronic supplementary material, figure S9A), here named the TRPV subfamily, *nanchung* and *inactive*. Phylogenetics suggests that placozoans (a basal animal phylum) and cnidarians have both *inactive* and *nanchung*, indicating that the TRPV, *nanchung*, and *inactive* clades all substantially pre-date the emergence of vertebrates [3]. Moreover, these same analyses indicate that choanoflagellate TRPV channels phylogenetically cluster more closely to mammalian TRPV than to *inactive/nanchung* [3]. It therefore appears that, in bilaterians, TRPV was lost in an early protostome ancestor, while *nanchung* and *inactive* were lost in an early deuterostome ancestor.

With respect to function, TRPV channels diversified greatly over the course of evolution. TRPV channels serve as temperature, chemical and osmotic sensors in vertebrates [121,123–128], chemical and mechanical sensors in nematodes [122], and hygro- and mechanosensors in insects [42,119].

A sister family to TRPV, called TRPVL, was proposed via phylogenetics by Peng *et al.* in 2015, albeit its presence is restricted to cnidarian and annelid genomes [3].

(i) TRPY and TRPF: the fungus-specific TRP channels

TRPY1 was the first of the fungus-specific TRP channels to be discovered [10], a group that has since been expanded to include TRPF1–5 [8]. While a detailed structure of these channels has not been elucidated, TRPY1 is thought to form an intracellular Ca²⁺ channel which gates in response to cytoplasmic Ca²⁺, osmotic shock, mechanical deformations and aromatic compounds [10,129–135]. In yeast, TRPY1 is expressed in the vacuole [10]. Like TRPY1, *TRPF* genes encode intracellular channels. They, however, do not gate Ca²⁺ in response to osmotic shock, and it is unknown what functions TRPFs actively participate in [8].

Early phylogenetic evidence supported TRPY as a distinct group outside the canonical Group 1/Group 2 divide [7]. While recent analyses agree that TRPY may have diversified specifically in fungi, they instead suggest that TRPY is likely to be a sister group to TRPP, which also has yeast constituents [11]. While we have left the position of TRPY/TRPF unresolved with respect to Group 1 and Group 2 (figure 2), the hypothesis that they form a sister group to TRPP is parsimonious with the presence of various non-TRPP channels in non-fungal genomes. The position of TRPF channels in the wider TRP phylogeny has not been well resolved; they are likely to be very closely related to TRPY, and therefore to sort in the same position [8].

4. Future directions

Despite many recent advances in our understanding of TRP evolution, much of the relationships between TRP channels remains to be uncovered. In short, the phylogenetic independence of some major putative families (e.g. TRPV and

TRPVL) and many subfamilies (e.g. TRPMc) continue to be relatively underexplored. Moreover, many subfamilies named herein have not been extensively or explicitly characterized in the literature. Using TRPC as an example, this is true despite the family containing the namesake of TRP channels themselves.

Resolution, however, need not only come via large-scale phylogenetic analyses. Functional and structural studies are also required, as the subdivision of clades absent structural or functional differences would be of more limited use. The ancient nature of many of these subfamilies may in fact be a clue that they are functionally divergent, and we should thus not assume that the characterization of a single family member is necessary generalizable to others. Functional and structural work will also be key to understanding the nature of ancestral TRP channels, and their role in ancient nervous systems. Some have hypothesized, for example, that TRPMs and TRPAs functioned in ancestral bilaterian nervous systems in similar ways to modern nervous systems [18,19]. Short of continued study, these remain hypotheses chiefly grounded in the conservation of critical amino acids.

Continued study is also required to elucidate unique properties TRP channels have as compared to their closest cousins (e.g. voltage-gated Ca^{2+} , K^{+} and Na^{+} channels) [13] (figure 2)—properties like low voltage sensitivity [136]—which can be

used to better understand the evolution and diversification of the broader voltage-gated ion channel clade.

Given how ancient most of these TRP families are, and the widespread nature of their expression patterns and functions, continued study of TRP channels also stands to reveal much more than information relevant to nervous systems. This is in part because TRP channels themselves—and perhaps their sensory capacity—pre-date the nervous system, which is so often credited as the basis for behaviour. It is therefore possible our view should be, in a sense, smaller—that we might consider TRP channels among the basic, necessary components which facilitated the evolution of complex behaviours and physiology; the components which made the nervous system, complex signaling mechanisms in the kidney, and like systems, viable.

Data accessibility. This article has no additional data.

Authors' contributions. Drafted the original manuscript, N.J.H.; critically analysed, edited and drafted final manuscript, N.J.H. and D.N.C.; supervision, DNC; funding acquisition, N.J.H., D.N.C.

Competing interests. We declare we have no competing interests.

Funding. This work is supported by the grant no. NIH R01 NS115209-01 to D.N.C. N.J.H. was supported by grant no. NIH F31 NS117087-01, a GSU Brains & Behavior Fellowship, and a Kenneth W. and Georganne F. Honeycutt Fellowship.

Acknowledgements. We thank PhyloPic for figure 2 silhouettes (in public domain).

References

- Venkatachalam K, Montell C. 2007 TRP channels. *Annu. Rev. Biochem.* **76**, 387–417. (doi:10.1146/annurev.biochem.75.103004.142819)
- Himmel NJ, Gray TR, Cox DN. 2020 Phylogenetics identifies two eumetazoan TRPM clades and an eighth TRP family, TRP Soromelastatin (TRPS). *Mol. Biol. Evol.* **37**, 2034–2044. (doi:10.1093/molbev/msaa065)
- Peng G, Shi X, Kadowaki T. 2015 Evolution of TRP channels inferred by their classification in diverse animal species. *Mol. Phylogenet. Evol.* **84**, 145–157. (doi:10.1016/j.ympev.2014.06.016)
- Arias-Darraz L, Cabezas D, Colenso CK, Alegría-Arcos M, Bravo-Moraga F, Varas-Concha I, Almonacid DE, Madrid R, Brauchi S. 2015 A transient receptor potential ion channel in *Chlamydomonas* shares key features with sensory transduction-associated TRP channels in mammals. *Plant Cell* **27**, 177–188. (doi:10.1105/tpc.114.131862)
- Bezares-Calderón LA, Berger J, Jasek S, Veraszto C, Mendes S, Gühmann M, Almeda R, Shahidi R, Jékely G. 2018 Neural circuitry of a polycystin-mediated hydrodynamic startle response for predator avoidance. *eLife* **7**, e36262. (doi:10.7554/eLife.36262)
- Cai X. 2006 Unicellular Ca^{2+} Signaling 'Toolkit' at the Origin of metazoa. *Mol. Biol. Evol.* **25**, 1357–1361. (doi:10.1093/molbev/msn077)
- Cai X, Clapham DE. 2011 Ancestral Ca^{2+} signaling machinery in early animal and fungal evolution. *Mol. Biol. Evol.* **29**, 91–100. (doi:10.1093/molbev/msr149)
- Lange M, Weihmann F, Schliebner I, Horbach R, Deising HB, Wirsell SGR, Peiter E. 2016 The transient receptor potential (TRP) channel family in *Colletotrichum graminicola*: a molecular and physiological analysis. *PLoS ONE* **11**, e0158561. (doi:10.1371/journal.pone.0158561)
- Lindström JB, Pierce NT, Latz MI. 2017 Role of TRP channels in Dinoflagellate Mechanotransduction. *Biol. Bull.* **233**, 151–167. (doi:10.1086/695421)
- Palmer CP, Zhou X-L, Lin J, Loukin SH, Kung C, Saimi Y. 2001 A TRP homolog in *Saccharomyces cerevisiae* forms an intracellular Ca^{2+} -permeable channel in the yeast vacuolar membrane. *Proc. Natl Acad. Sci. USA* **98**, 7801–7805. (doi:10.1073/pnas.141036198)
- Palovcak E, Delemotte L, Klein ML, Carnevale V. 2015 Comparative sequence analysis suggests a conserved gating mechanism for TRP channels. *J. Gen. Physiol.* **146**, 37–50. (doi:10.1085/jgp.201411329)
- Montell C. 2005 The TRP superfamily of cation channels. *Sci. Signal.* **2005**, re3. (doi:10.1126/stke.2722005re3)
- Arendt D. 2020 The evolutionary assembly of neuronal machinery. *Curr. Biol.* **30**, R603–R616. (doi:10.1016/j.cub.2020.04.008)
- Fujiu K, Nakayama Y, Iida H, Sokabe M, Yoshimura K. 2011 Mechanoreception in motile flagella of *Chlamydomonas*. *Nat. Cell Biol.* **13**, 630–632. (doi:10.1038/ncb2214)
- Huang K, Diener DR, Mitchell A, Pazour GJ, Witman GB, Rosenbaum JL. 2007 Function and dynamics of PKD2 in *Chlamydomonas reinhardtii* flagella. *J. Cell Biol.* **179**, 501–514. (doi:10.1083/jcb.200704069)
- Glauser DA, Chen WC, Agin R, Macinnis BL, Hellman AB, Garrity PA, Tan M-W, Goodman MB. 2011 Heat avoidance is regulated by transient receptor potential (TRP) channels and a neuropeptide signaling pathway in *Caenorhabditis elegans*. *Genetics* **188**, 91–103. (doi:10.1534/genetics.111.127100)
- Schüler A, Schmitz G, Reft A, Özbek S, Thurm U, Bombberg-Bauer E. 2015 The Rise and Fall of TRP-N, an ancient family of mechanogated ion channels, in Metazoa. *Genome Biol. Evol.* **7**, 1713–1727. (doi:10.1093/gbe/evv091)
- Himmel NJ, Letcher JM, Sakurai A, Gray TR, Benson MN, Cox DN. 2019 *Drosophila* menthol sensitivity and the Precambrian origins of transient receptor potential-dependent chemosensation. *Phil. Trans. R. Soc. B* **374**, 20190369. (doi:10.1098/rstb.2019.0369)
- Kang K, Pulver SR, Panzano VC, Chang EC, Griffith LC, Theobald DL, Garrity PA. 2010 Analysis of *Drosophila* TRPA1 reveals an ancient origin for human chemical nociception. *Nature* **464**, 597–600. (doi:10.1038/nature08848)
- Kozma MT, Ngo-Vu H, Wong YY, Shukla NS, Pawar SD, Senatore A, Schmidt M, Derby CD. 2020 Comparison of transcriptomes from two chemosensory organs in four decapod crustaceans reveals hundreds of candidate chemoreceptor proteins. *PLoS ONE* **15**, e0230266–e0230266. (doi:10.1371/journal.pone.0230266)

21. Kozma MT, Schmidt M, Ngo-Vu H, Sparks SD, Senatore A, Derby CD. 2018 Chemoreceptor proteins in the Caribbean spiny lobster, *Panulirus argus*: expression of ionotropic receptors, gustatory receptors, and TRP channels in two chemosensory organs and brain. *PLoS ONE* **13**, e0203935. (doi:10.1371/journal.pone.0203935)
22. Paulsen CE, Armache J-P, Gao Y, Cheng Y, Julius D. 2015 Structure of the TRPA1 ion channel suggests regulatory mechanisms. *Nature* **520**, 511–517. (doi:10.1038/nature14367)
23. Jaquemar D, Schenker T, Trueb B. 1999 An ankyrin-like protein with transmembrane domains is specifically lost after oncogenic transformation of human fibroblasts. *J. Biol. Chem.* **274**, 7325–7333. (doi:10.1074/jbc.274.11.7325)
24. Story GM *et al.* 2003 ANKTM1, a TRP-like channel expressed in nociceptive neurons, is activated by cold temperatures. *Cell* **112**, 819–829. (doi:10.1016/S0092-8674(03)00158-2)
25. Viswanath V, Story GM, Peier AM, Petrus MJ, Lee VM, Hwang SW, Patapoutian A, Jegla T. 2003 Opposite thermosensor in fruitfly and mouse. *Nature* **423**, 822–823. (doi:10.1038/423822a)
26. Laursen WJ, Anderson EO, Hoffstaetter LJ, Bagriantsev SN, Gracheva EO. 2015 Species-specific temperature sensitivity of TRPA1. *Temperature* **2**, 214–226. (doi:10.1080/23328940.2014.1000702)
27. Corey DP *et al.* 2004 TRPA1 is a candidate for the mechanosensitive transduction channel of vertebrate hair cells. *Nature* **432**, 723–730. (doi:10.1038/nature03066)
28. Ogino T, Toyohara H. 2019 Identification of possible hypoxia sensor for behavioral responses in a marine annelid, *Capitella teleta*. *Biol. Open* **8**, bio037630. (doi:10.1242/bio.037630)
29. Bautista DM, Movahed P, Hinman A, Axelsson HE, Sterner O, Högestätt ED, Julius D, Jordt S-E, Zygmunt PM. 2005 Pungent products from garlic activate the sensory ion channel TRPA1. *Proc. Natl Acad. Sci. USA* **102**, 12 248–12 252. (doi:10.1073/pnas.0505356102)
30. Hinman A, Chuang H-H, Bautista DM, Julius D. 2006 TRP channel activation by reversible covalent modification. *Proc. Natl Acad. Sci. USA* **103**, 19 564–19 568. (doi:10.1073/pnas.0609598103)
31. Jordt SE, Bautista DM, Chuang HH, McKemy DD, Zygmunt PM, Högestätt ED, Meng ID, Julius D. 2004 Mustard oils and cannabinoids excite sensory nerve fibres through the TRP channel ANKTM1. *Nature* **427**, 260–265. (doi:10.1038/nature02282)
32. Bandell M, Story GM, Hwang SW, Viswanath V, Eid SR, Petrus MJ, Earley TJ, Patapoutian A. 2004 Noxious cold ion channel TRPA1 is activated by pungent compounds and Bradykinin. *Neuron* **41**, 849–857. (doi:10.1016/S0896-6273(04)00150-3)
33. Karashima Y, Damann N, Prenen J, Talavera K, Segal A, Voets T, Nilius B. 2007 Bimodal action of menthol on the transient receptor potential channel TRPA1. *J. Neurosci.* **27**, 9874–9884. (doi:10.1523/JNEUROSCI.2221-07.2007)
34. Rawls SM, Gomez T, Ding Z, Raffa RB. 2007 Differential behavioral effect of the TRPM8/TRPA1 channel agonist icilin (AG-3-5). *Eur. J. Pharmacol.* **575**, 103–104. (doi:10.1016/j.ejphar.2007.07.060)
35. Arenas OM, Zaharieva EE, Para A, Vázquez-Doorman C, Petersen CP, Gallio M. 2017 Activation of planarian TRPA1 by reactive oxygen species reveals a conserved mechanism for animal nociception. *Nat. Neurosci.* **20**, 1686–1693. (doi:10.1038/s41593-017-0005-0)
36. Viana F. 2016 TRPA1 channels: molecular sentinels of cellular stress and tissue damage. *J. Physiol.* **594**, 4151–4169. (doi:10.1113/JP270935)
37. Talavera K, Startek JB, Alvarez-Collazo J, Boonen B, Alpizar YA, Sanchez A, Naert R, Nilius B. 2019 Mammalian transient receptor potential TRPA1 channels: from structure to disease. *Physiol. Rev.* **100**, 725–803. (doi:10.1152/physrev.00005.2019)
38. Xiao B, Dubin AE, Bursulaya B, Viswanath V, Jegla TJ, Patapoutian A. 2008 Identification of transmembrane domain 5 as a critical molecular determinant of menthol sensitivity in mammalian TRPA1 channels. *J. Neurosci.* **28**, 9640–9651. (doi:10.1523/JNEUROSCI.2772-08.2008)
39. Kindt KS, Viswanath V, Macpherson L, Quast K, Hu H, Patapoutian A, Schafer WR. 2007 *Caenorhabditis elegans* TRPA-1 functions in mechanosensation. *Nat. Neurosci.* **10**, 568–577. (doi:10.1038/nn1886)
40. Kohno K, Sokabe T, Tominaga M, Kadowaki T. 2010 Honey bee thermal/chemical sensor, AmHsTRPA, reveals neofunctionalization and loss of transient receptor potential channel genes. *J. Neurosci.* **30**, 12 219–12 229. (doi:10.1523/JNEUROSCI.2001-10.2010)
41. Lee Y *et al.* 2005 Pyrexia is a new thermal transient receptor potential channel endowing tolerance to high temperatures in *Drosophila melanogaster*. *Nat. Genet.* **37**, 305–310. (doi:10.1038/ng1513)
42. Liu L, Li Y, Wang R, Yin C, Dong Q, Hing H, Kim C, Welsh MJ. 2007 *Drosophila* hygro-sensation requires the TRP channels water witch and nanchung. *Nature* **450**, 294–298. (doi:10.1038/nature06223)
43. Matsuura H, Sokabe T, Kohno K, Tominaga M, Kadowaki T. 2009 Evolutionary conservation and changes in insect TRP channels. *BMC Evol. Biol.* **9**, 228–228. (doi:10.1186/1471-2148-9-228)
44. Tracey WD Jr, Wilson RI, Laurent G, Benzer S. 2003 *painless*, a *Drosophila* gene essential for nociception. *Cell* **113**, 261–273. (doi:10.1016/s0092-8674(03)00272-1)
45. Senthilan PR *et al.* 2012 *Drosophila* auditory organ genes and genetic hearing defects. *Cell* **150**, 1042–1054. (doi:10.1016/j.cell.2012.06.043)
46. Cosens DJ, Manning A. 1969 Abnormal electroretinogram from a *Drosophila* mutant. *Nature* **224**, 285–287. (doi:10.1038/224285a0)
47. Montell C, Rubin GM. 1989 Molecular characterization of the *Drosophila trp* locus: a putative integral membrane protein required for phototransduction. *Neuron* **2**, 1313–1323. (doi:10.1016/0896-6273(89)90069-X)
48. Wong F, Schaefer EL, Roop BC, LaMendola JN, Johnson-Seaton D, Shao D. 1989 Proper function of the *Drosophila trp* gene product during pupal development is important for normal visual transduction in the adult. *Neuron* **3**, 81–94. (doi:10.1016/0896-6273(89)90117-7)
49. Duan J *et al.* 2019 Cryo-EM structure of TRPC5 at 2.8-Å resolution reveals unique and conserved structural elements essential for channel function. *Sci. Adv.* **5**, eaaw7935. (doi:10.1126/sciadv.aaw7935)
50. Duan J *et al.* 2018 Structure of the mouse TRPC4 ion channel. *Nat. Commun.* **9**, 3102–3102. (doi:10.1038/s41467-018-05247-9)
51. Tang Q, Guo W, Zheng L, Wu J-X, Liu M, Zhou X, Zhang X, Chen L. 2018 Structure of the receptor-activated human TRPC6 and TRPC3 ion channels. *Cell Res.* **28**, 746–755. (doi:10.1038/s41422-018-0038-2)
52. Wang H, Cheng X, Tian J, Xiao Y, Tian T, Xu F, Hong X, Zhu MX. 2020 TRPC channels: structure, function, regulation and recent advances in small molecular probes. *Pharmacol. Ther.* **209**, 107 497–107 497. (doi:10.1016/j.pharmthera.2020.107497)
53. Clapham DE, Runnels LW, Strübing C. 2001 The TRP ion channel family. *Nat. Rev. Neurosci.* **2**, 387–396. (doi:10.1038/35077544)
54. Duncan LM, Deeds J, Hunter J, Shao J, Holmgren LM, Woolf EA, Tepper RI, Shyjan AW. 1998 Down-regulation of the Novel Gene *Melastatin* correlates with potential for melanoma metastasis. *Cancer Res.* **58**, 1515.
55. Diver MM, Cheng Y, Julius D. 2019 Structural insights into TRPM8 inhibition and desensitization. *Science* **365**, 1434–1440. (doi:10.1126/science.aax6672)
56. Yin Y, Le SC, Hsu AL, Borgnia MJ, Yang H, Lee S-Y. 2019 Structural basis of cooling agent and lipid sensing by the cold-activated TRPM8 channel. *Science* **363**, eaav9334. (doi:10.1126/science.aav9334)
57. Yin Y, Wu M, Zubcevic L, Borschel WF, Lander GC, Lee S-Y. 2018 Structure of the cold- and menthol-sensing ion channel TRPM8. *Science* **359**, 237–241. (doi:10.1126/science.aan4325)
58. Saito S, Shingai R. 2006 Evolution of thermoTRP ion channel homologs in vertebrates. *Physiol. Genomics* **27**, 219–230. (doi:10.1152/physiolgenomics.00322.2005)
59. Huang Y, Flegert R, Guse AH, Lü W, Du J. 2020 A structural overview of the ion channels of the TRPM family. *Cell Calcium* **85**, 102111. (doi:10.1016/j.ceca.2019.102111)
60. Bautista DM, Siemens J, Glazer JM, Tsuruda PR, Basbaum AI, Stucky CL, Jordt S-E, Julius D. 2007 The menthol receptor TRPM8 is the principal detector of environmental cold. *Nature* **448**, 204–208. (doi:10.1038/nature05910)
61. Chuang HH, Neuhauss WM, Julius D. 2004 The super-cooling agent icilin reveals a mechanism of coincidence detection by a temperature-sensitive TRP channel. *Neuron* **43**, 859–869. (doi:10.1016/j.neuron.2004.08.038)
62. McKemy DD, Neuhauss WM, Julius D. 2002 Identification of a cold receptor reveals a general role for TRP channels in thermosensation. *Nature* **416**, 52–58. (doi:10.1038/nature719)

63. Peier AM *et al.* 2002 A TRP channel that senses cold stimuli and menthol. *Cell* **108**, 705–715. (doi:10.1016/S0092-8674(02)00652-9)
64. Tsavaler L, Shapero MH, Morkowski S, Laus R. 2001 Trp-p8, a novel prostate-specific gene, is up-regulated in prostate cancer and other malignancies and shares high homology with transient receptor potential calcium channel proteins. *Cancer Res.* **61**, 3760–3769.
65. Turner HN *et al.* 2016 The TRP channels Pkd2, NompC, and Trpm Act in cold-sensing neurons to mediate unique aversive behaviors to noxious cold in *Drosophila*. *Curr. Biol.* **26**, 3116–3128. (doi:10.1016/j.cub.2016.09.038)
66. Lü W, Du J. 2020 The N-terminal domain in TRPM2 channel is a conserved nucleotide binding site. *J. Gen. Physiol.* **152**, e201912555. (doi:10.1085/jgp.201912555)
67. Tóth B, Iordanov I, Csányi L. 2020 Selective profiling of N- and C-terminal nucleotide-binding sites in a TRPM2 channel. *J. Gen. Physiol.* **152**, e201912533. (doi:10.1085/jgp.201912533)
68. Bargal R *et al.* 2000 Identification of the gene causing mucopolidosis type IV. *Nat. Genet.* **26**, 118–122. (doi:10.1038/79095)
69. Bach G. 2005 Mucolipin 1: endocytosis and cation channel—a review. *Eur. J. Physiol.* **451**, 313–317. (doi:10.1007/s00424-004-1361-7)
70. García-Añoveros J, Wiwatpanit T. 2014 TRPML2 and mucolipin evolution. *Handb. Exp. Pharmacol.* **222**, 647–658. (doi:10.1007/978-3-642-54215-2_25)
71. Pryor PR, Reimann F, Gribble FM, Luzio JP. 2006 Mucolipin-1 is a lysosomal membrane protein required for intracellular lactosylceramide traffic. *Traffic* **7**, 1388–1398. (doi:10.1111/j.1600-0854.2006.00475.x)
72. Thompson EG, Schaheen L, Dang H, Fares H. 2007 Lysosomal trafficking functions of mucolipin-1 in murine macrophages. *BMC Cell Biol.* **8**, 54–54. (doi:10.1186/1471-2121-8-54)
73. Vargarajauregui S, Puertollano R. 2006 Two dileucine motifs regulate trafficking of mucolipin-1 to lysosomes. *Traffic* **7**, 337–353. (doi:10.1111/j.1600-0854.2006.00387.x)
74. Sun L, Hua Y, Vargarajauregui S, Diab HI, Puertollano R. 2015 Novel Role of TRPML2 in the regulation of the innate immune response. *J. Immunol.* **195**, 4922–4932. (doi:10.4049/jimmunol.1500163)
75. Kim HJ, Soyombo AA, Tjon-Kon-Sang S, So I, Muallem S. 2009 The Ca²⁺ channel TRPML3 regulates membrane trafficking and autophagy. *Traffic* **10**, 1157–1167. (doi:10.1111/j.1600-0854.2009.00924.x)
76. Martina JA, Lelouvier B, Puertollano R. 2009 The calcium channel mucolipin-3 is a novel regulator of trafficking along the endosomal pathway. *Traffic* **10**, 1143–1156. (doi:10.1111/j.1600-0854.2009.00935.x)
77. Lelouvier B, Puertollano R. 2011 Mucolipin-3 regulates luminal calcium, acidification, and membrane fusion in the endosomal pathway. *J. Biol. Chem.* **286**, 9826–9832. (doi:10.1074/jbc.M110.169185)
78. Lev S, Zeevi DA, Frumkin A, Offen-Glasner V, Bach G, Minke B. 2010 Constitutive activity of the human TRPML2 channel induces cell degeneration. *J. Biol. Chem.* **285**, 2771–2782. (doi:10.1074/jbc.M109.046508)
79. Samie MA, Grimm C, Evans JA, Curcio-Morelli C, Heller S, Slaugenhaupt SA, Cuajungco MP. 2009 The tissue-specific expression of TRPML2 (MCOLN-2) gene is influenced by the presence of TRPML1. *Eur. J. Physiol.* **459**, 79–91. (doi:10.1007/s00424-009-0716-5)
80. Karacsonyi C, Miguel AS, Puertollano R. 2007 Mucolipin-2 localizes to the Arf6-associated pathway and regulates recycling of GPI-APs. *Traffic* **8**, 1404–1414. (doi:10.1111/j.1600-0854.2007.00619.x)
81. Fine M, Li X, Dang S. 2020 Structural insights into group II TRP channels. *Cell Calcium* **86**, 102107. (doi:10.1016/j.ceca.2019.102107)
82. Walker RG, Willingham AT, Zuker CS. 2000 A *Drosophila* mechanosensory transduction channel. *Science* **287**, 2229–2234. (doi:10.1126/science.287.5461.2229)
83. Jin P *et al.* 2017 Electron cryo-microscopy structure of the mechanotransduction channel NOMPC. *Nature* **547**, 118–122. (doi:10.1038/nature22981)
84. Zhang W *et al.* 2015 Ankyrin repeats convey force to gate the NOMPC mechanotransduction channel. *Cell* **162**, 1391–1403. (doi:10.1016/j.cell.2015.08.024)
85. Cheng LE, Song W, Looger LL, Jan LY, Jan YN. 2010 The role of the TRP channel NompC in *Drosophila* larval and adult locomotion. *Neuron* **67**, 373–380. (doi:10.1016/j.neuron.2010.07.004)
86. Li W, Feng Z, Sternberg PW, Shawn Xu XZ. 2006 A *C. elegans* stretch receptor neuron revealed by a mechanosensitive TRP channel homologue. *Nature* **440**, 684–687. (doi:10.1038/nature04538)
87. Sawin ER, Ranganathan R, Horvitz HR. 2000 *C. elegans* Locomotory rate is modulated by the environment through a dopaminergic pathway and by experience through a serotonergic pathway. *Neuron* **26**, 619–631. (doi:10.1016/S0896-6273(00)81199-X)
88. Sidi S, Friedrich RW, Nicolson T. 2003 NompC TRP channel required for vertebrate sensory hair cell mechanotransduction. *Science* **301**, 96–99. (doi:10.1126/science.1084370)
89. Yan Z, Zhang W, He Y, Gorczyca D, Xiang Y, Cheng LE, Meltzer S, Jan LY, Jan YN. 2013 *Drosophila* NOMPC is a mechanotransduction channel subunit for gentle-touch sensation. *Nature* **493**, 221–225. (doi:10.1038/nature11685)
90. Zhang W, Yan Z, Jan LY, Jan YN. 2013 Sound response mediated by the TRP channels NOMPC, NANCHUNG, and INACTIVE in chordotonal organs of *Drosophila* larvae. *Proc. Natl Acad. Sci. USA* **110**, 13 612–13 617. (doi:10.1073/pnas.1312477110)
91. Mochizuki T *et al.* 1996 PKD2, a gene for polycystic kidney disease that encodes an integral membrane protein. *Science* **272**, 1339–1342. (doi:10.1126/science.272.5266.1339)
92. The European Polycystic Kidney Disease Consortium. 1994 The polycystic kidney disease 1 gene encodes a 14 kb transcript and lies within a duplicated region on chromosome 16. *Cell* **77**, 881–894. (doi:10.1016/0092-8674(94)90137-6)
93. England SJ, Campbell PC, Banerjee S, Swanson AJ, Lewis KE. 2017 Identification and expression analysis of the complete family of zebrafish pkd genes. *Front Cell Dev. Biol.* **5**, 5. (doi:10.3389/fcell.2017.00005)
94. Gallio M, Ofstad TA, Macpherson LJ, Wang JW, Zuker CS. 2011 The coding of temperature in the *Drosophila* brain. *Cell* **144**, 614–624. (doi:10.1016/j.cell.2011.01.028)
95. The International Polycystic Kidney Disease Consortium. 1995 Polycystic kidney disease: the complete structure of the PKD1 gene and its protein. *Cell* **81**, 289–298. (doi:10.1016/0092-8674(95)90339-9)
96. Cornec-Le Gall E *et al.* 2013 Type of PKD1 mutation influences renal outcome in ADPKD. *J. Am. Soc. Nephrol.* **24**, 1006–1013. (doi:10.1681/ASN.2012070650)
97. Guillaume R, D'Agati V, Daoust M, Trudel M. 1999 Murine Pkd1 is a developmentally regulated gene from morula to adulthood: role in tissue condensation and patterning. **214**, 337–348. (doi:10.1002/(sici)1097-0177(199904)214:4<337::Aid-aja6>3.0.Co;2-o)
98. Tsiokas L, Kim E, Arnould T, Sukhatme VP, Walz G. 1997 Homo- and heterodimeric interactions between the gene products of PKD1 and PKD2. *Proc. Natl Acad. Sci. USA* **94**, 6965–6970. (doi:10.1073/pnas.94.13.6965)
99. Watnick TJ, Jin Y, Matunis E, Kernan MJ, Montell C. 2003 A flagellar polycystin-2 homologue required for male fertility in *Drosophila*. *Curr. Biol.* **13**, 2179–2184. (doi:10.1016/j.cub.2003.12.002)
100. Barr MM, Sternberg PW. 1999 A polycystic kidney-disease gene homologue required for male mating behaviour in *C. elegans*. *Nature* **401**, 386–389. (doi:10.1038/43913)
101. McLaughlin S. 2017 Evidence that polycystins are involved in *Hydra* cnidocyte discharge. *Invert. Neurosci.* **17**, 1. (doi:10.1007/s10158-016-0194-3)
102. Mao F, Lu WJ, Yang Y, Qiao X, Ye GY, Huang J. 2020 Identification, characterization and expression analysis of TRP channel genes in the vegetable pest, *Pieris rapae*. *Insects* **11**, 192. (doi:10.3390/insects11030192)
103. Su H-A, Bai X, Zeng T, Lu Y-Y, Qi Y-X. 2018 Identification, characterization and expression analysis of transient receptor potential channel genes in the oriental fruit fly, *Bactrocera dorsalis*. *BMC Genomics* **19**, 674. (doi:10.1186/s12864-018-5053-7)
104. Woodward OM, Watnick T. 2019 Molecular structure of the PKD protein complex finally solved. *Am. J. Kidney Dis.* **73**, 620–623. (doi:10.1053/ajkd.2018.12.022)
105. Su Q, Hu F, Ge X, Lei J, Yu S, Wang T, Zhou Q, Mei C, Shi Y. 2018 Structure of the human PKD1-PKD2

- complex. *Science* **361**, eaat9819. (doi:10.1126/science.aat9819)
106. Liu X, Vien T, Duan J, Sheu S-H, DeCaen PG, Clapham DE. 2018 Polycystin-2 is an essential ion channel subunit in the primary cilium of the renal collecting duct epithelium. *eLife* **7**, e33183. (doi:10.7554/eLife.33183)
 107. Turner HN, Patel AA, Cox DN, Galko MJ. 2018 Injury-induced cold sensitization in *Drosophila* larvae involves behavioral shifts that require the TRP channel Brv1. *PLoS ONE* **13**, e0209577. (doi:10.1371/journal.pone.0209577)
 108. Morris Z, Sinha D, Poddar A, Morris B, Chen Q. 2019 Fission yeast TRP channel Pkd2p localizes to the cleavage furrow and regulates cell separation during cytokinesis. *Mol. Biol. Cell* **30**, 1791–1804. (doi:10.1091/mbc.E18-04-0270)
 109. Palmer CP, Aydar E, Djamgoz MBA. 2005 A microbial TRP-like polycystic-kidney-disease-related ion channel gene. *Biochem. J.* **387**, 211–219. (doi:10.1042/BJ20041710)
 110. Driscoll K, Stanfield GM, Droste R, Horvitz HR. 2017 Presumptive TRP channel CED-11 promotes cell volume decrease and facilitates degradation of apoptotic cells in *Caenorhabditis elegans*. *Proc. Natl Acad. Sci. USA* **114**, 8806–8811. (doi:10.1073/pnas.1705084114)
 111. Cao E, Liao M, Cheng Y, Julius D. 2013 TRPV1 structures in distinct conformations reveal activation mechanisms. *Nature* **504**, 113–118. (doi:10.1038/nature12823)
 112. Liao M, Cao E, Julius D, Cheng Y. 2013 Structure of the TRPV1 ion channel determined by electron cryo-microscopy. *Nature* **504**, 107–112. (doi:10.1038/nature12822)
 113. Pumroy RA, Fluck EC, Ahmed T, Moiseenkova-Bell VY. 2020 Structural insights into the gating mechanisms of TRPV channels. *Cell Calcium* **87**, 102168. (doi:10.1016/j.ceca.2020.102168)
 114. Kaplan WD. 1977 iav: inactive. *Drosophila Inform. Serv.* **52**, 1.
 115. Homyk T, Sheppard DE. 1977 Behavioral mutants of *Drosophila melanogaster*. I. Isolation and mapping of mutations which decrease flight ability. *Genetics* **87**, 95–104.
 116. O'Dell KM. 1993 The effect of the *inactive* mutation on longevity, sex, rhythm and resistance to p-cresol in *Drosophila melanogaster*. *Heredity* **70**(Pt 4), 393–399. (doi:10.1038/hdy.1993.55)
 117. O'Dell KM. 1994 The *inactive* mutation leads to abnormal experience-dependent courtship modification in male *Drosophila melanogaster*. *Behav. Genet.* **24**, 381–388. (doi:10.1007/bf01067539)
 118. McClung C, Hirsh J. 1999 The trace amine tyramine is essential for sensitization to cocaine in *Drosophila*. *Curr. Biol.* **9**, 853–860. (doi:10.1016/s0960-9822(99)80389-3)
 119. Gong Z *et al.* 2004 Two interdependent TRPV channel subunits, inactive and Nanchung, mediate hearing in *Drosophila*. *J. Neurosci.* **24**, 9059–9066. (doi:10.1523/JNEUROSCI.1645-04.2004)
 120. Kim J *et al.* 2003 A TRPV family ion channel required for hearing in *Drosophila*. *Nature* **424**, 81–84. (doi:10.1038/nature01733)
 121. Caterina MJ, Schumacher MA, Tominaga M, Rosen TA, Levine JD, Julius D. 1997 The capsaicin receptor: a heat-activated ion channel in the pain pathway. *Nature* **389**, 816–824. (doi:10.1038/39807)
 122. Colbert HA, Smith TL, Bargmann CI. 1997 OSM-9, a novel protein with structural similarity to channels, is required for olfaction, mechanosensation, and olfactory adaptation in *Caenorhabditis elegans*. *J. Neurosci.* **17**, 8259–8269. (doi:10.1523/JNEUROSCI.17-21-08259.1997)
 123. Delany NS *et al.* 2001 Identification and characterization of a novel human vanilloid receptor-like protein, VR-L-2. *Physiol. Genomics* **4**, 165–174. (doi:10.1152/physiolgenomics.2001.4.3.165)
 124. Jordt S-E, Tominaga M, Julius D. 2000 Acid potentiation of the capsaicin receptor determined by a key extracellular site. *Proc. Natl Acad. Sci. USA* **97**, 8134–8139. (doi:10.1073/pnas.100129497)
 125. Liedtke W, Choe Y, Marti-Renom MA, Bell AM, Denis CS, Sali A, Hudspeth AJ, Friedman JM, Heller S. 2000 Vanilloid receptor-related osmotically activated channel (VR-OAC), a candidate vertebrate osmoreceptor. *Cell* **103**, 525–535. (doi:10.1016/s0092-8674(00)00143-4)
 126. Strotmann R, Harteneck C, Nunnenmacher K, Schultz G, Plant TD. 2000 OTRPC4, a nonselective cation channel that confers sensitivity to extracellular osmolarity. *Nat. Cell Biol.* **2**, 695–702. (doi:10.1038/35036318)
 127. Tominaga M, Caterina MJ, Malmberg AB, Rosen TA, Gilbert H, Skinner K, Raumann BE, Basbaum AI, Julius D. 1998 The cloned capsaicin receptor integrates multiple pain-producing stimuli. *Neuron* **21**, 531–543. (doi:10.1016/S0896-6273(00)80564-4)
 128. Wissenbach U, Bödding M, Freichel M, Flockerzi V. 2000 Trp12, a novel Trp related protein from kidney. *FEBS Lett.* **485**, 127–134. (doi:10.1016/S0014-5793(00)02212-2)
 129. Denis V, Cyert MS. 2002 Internal Ca²⁺ release in yeast is triggered by hypertonic shock and mediated by a TRP channel homologue. *J. Cell Biol.* **156**, 29–34. (doi:10.1083/jcb.200111004)
 130. Hamamoto S, Mori Y, Yabe I, Uozumi N. 2018 *In vitro* and *in vivo* characterization of modulation of the vacuolar cation channel TRPY1 from *Saccharomyces cerevisiae*. *FEBS J.* **285**, 1146–1161. (doi:10.1111/febs.14399)
 131. John Haynes W, Zhou X-L, Su Z-W, Loukin SH, Saimi Y, Kung C. 2008 Indole and other aromatic compounds activate the yeast TRPY1 channel. *FEBS Lett.* **582**, 1514–1518. (doi:10.1016/j.febslet.2008.03.046)
 132. Su Z, Kung C, Saimi Y. 2010 Dissecting the molecular mechanism of how force activates yeast TRP channel TRPY1. *Biophys. J.* **98**, 324a. (doi:10.1016/j.bpj.2009.12.1756)
 133. Su Z, Zhou X, Loukin SH, Saimi Y, Kung C. 2009 Mechanical force and cytoplasmic Ca²⁺ activate yeast TRPY1 in parallel. *J. Membr. Biol.* **227**, 141–150. (doi:10.1007/s00232-009-9153-9)
 134. Zhou X, Su Z, Anishkin A, Haynes WJ, Friske EM, Loukin SH, Kung C, Saimi Y. 2007 Yeast screens show aromatic residues at the end of the sixth helix anchor transient receptor potential channel gate. *Proc. Natl Acad. Sci. USA* **104**, 15 555–15 559. (doi:10.1073/pnas.0704039104)
 135. Zhou X-L, Batiza AF, Loukin SH, Palmer CP, Kung C, Saimi Y. 2003 The transient receptor potential channel on the yeast vacuole is mechanosensitive. *Proc. Natl Acad. Sci. USA* **100**, 7105–7110. (doi:10.1073/pnas.1230540100)
 136. Voets T, Owsianik G, Janssens A, Talavera K, Nilius B. 2007 TRPM8 voltage sensor mutants reveal a mechanism for integrating thermal and chemical stimuli. *Nat. Chem. Biol.* **3**, 174–182. (doi:10.1038/nchembio862)